



europython

Jul 23 - 26 2020

Online

DEPLOY ML BOTS LIKE A BOSS WITH CI/CD



WILLIAM GALINDEZ ARIAS

@WilliamAriasZ

1. *Why?* One Person Band





* GROANING, MUTTERING *



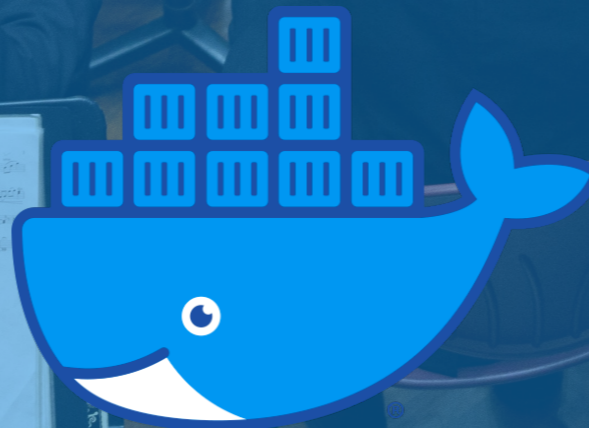
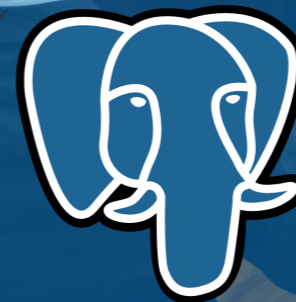
NGINIX



TensorFlow



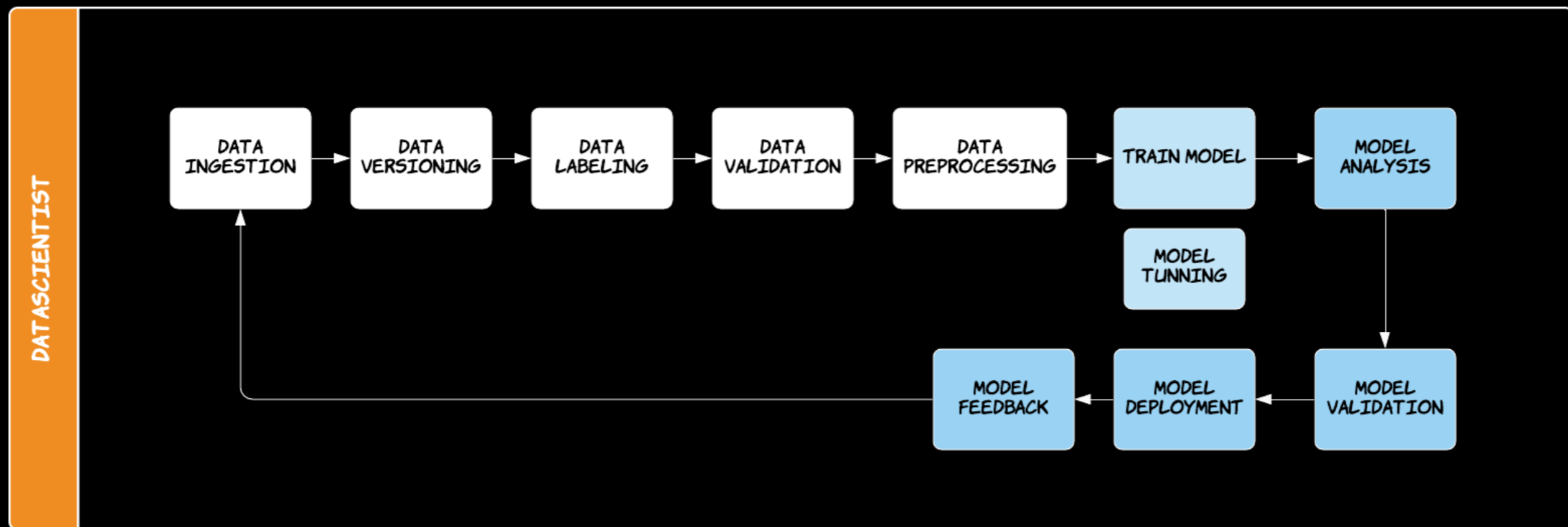
MySQL



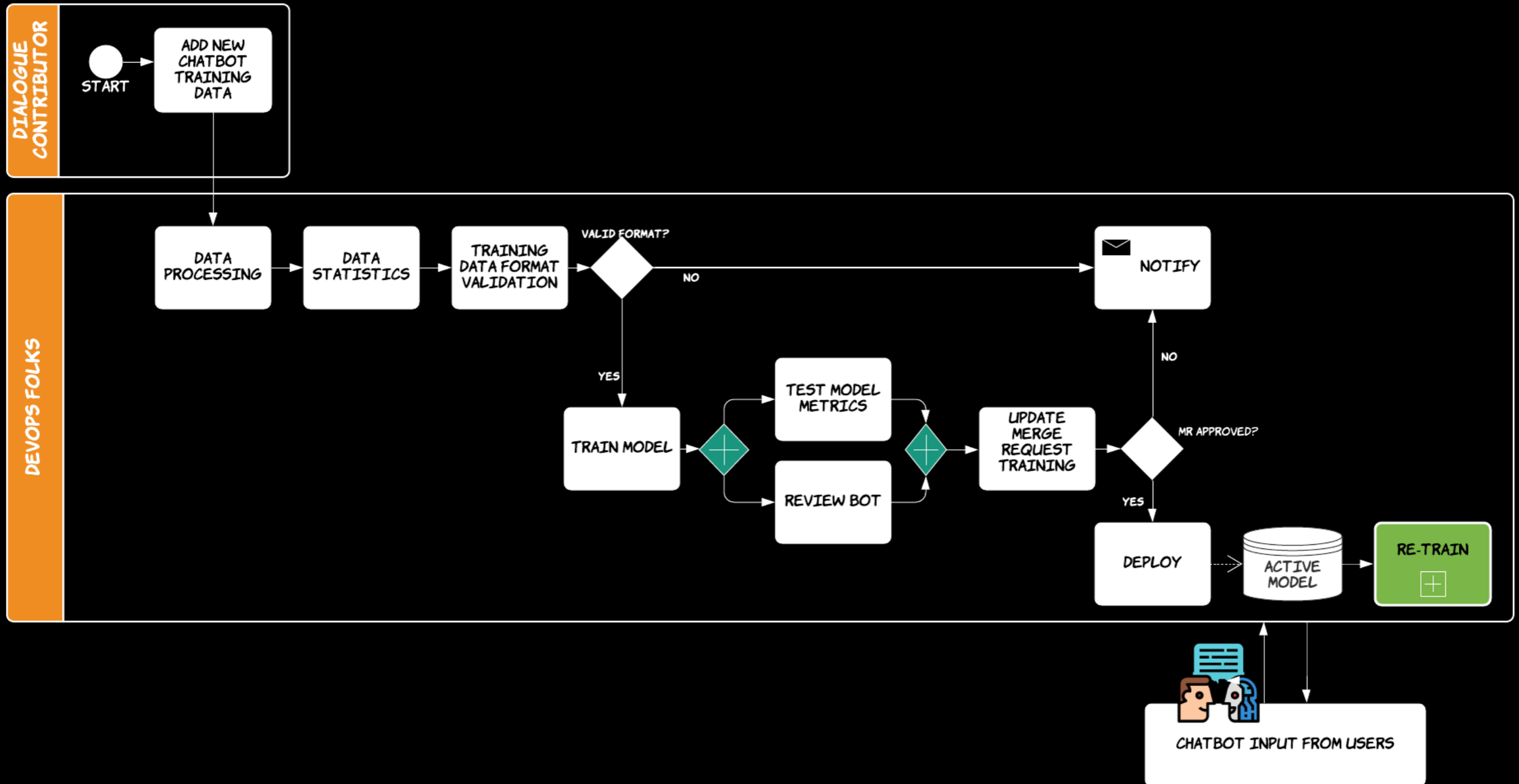
IaaS, PaaS, SaaS

2.How? Define the Symphony

Symphony: Model Life cycle View



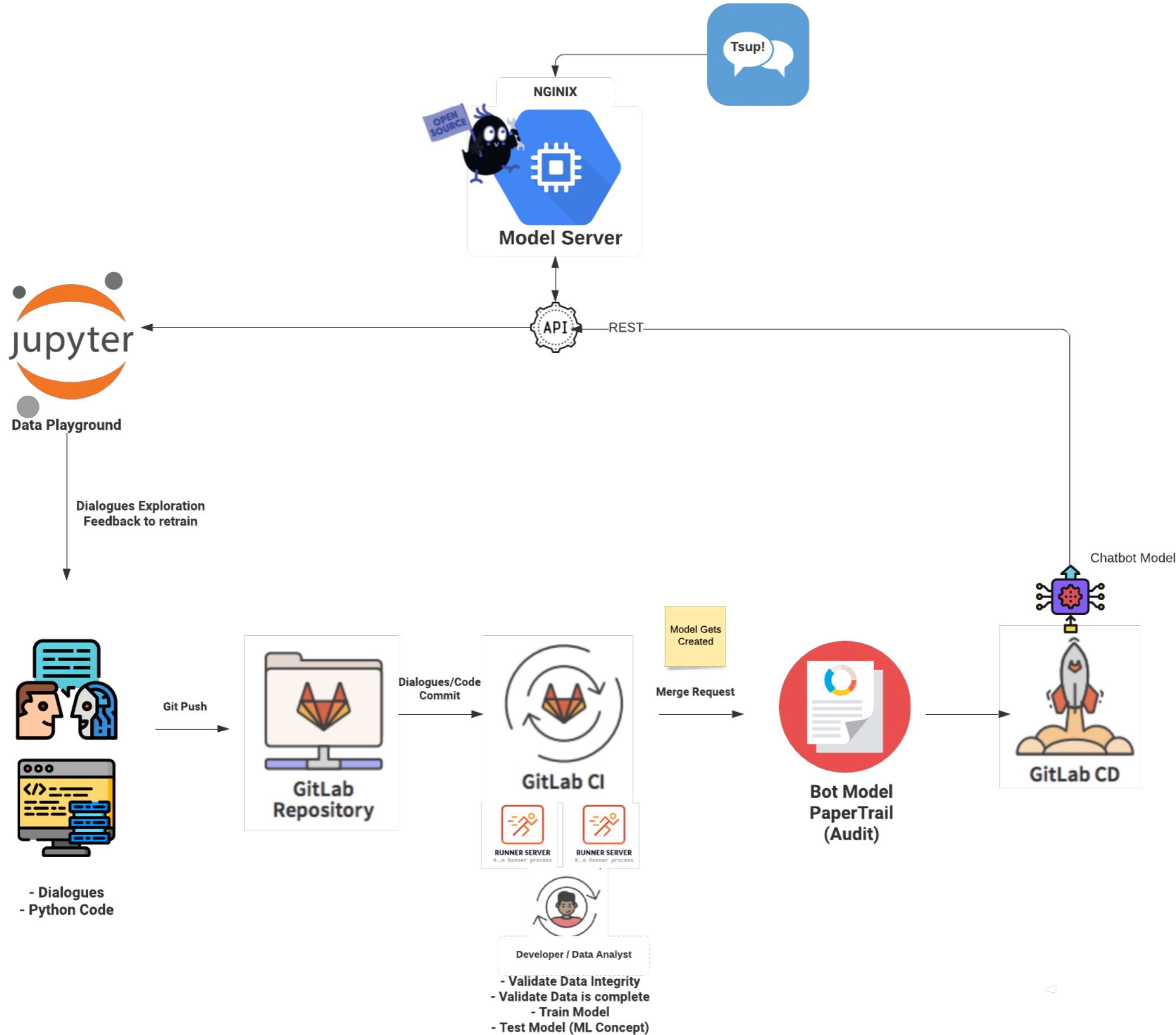
Symphony: Process View



Data is under Version Control*

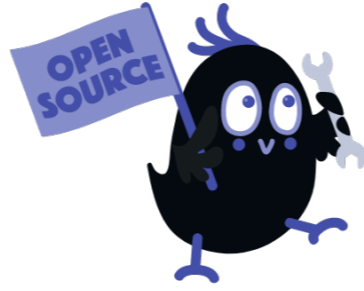
Common **understanding** of the process for **everyone**
who comes and reads it.

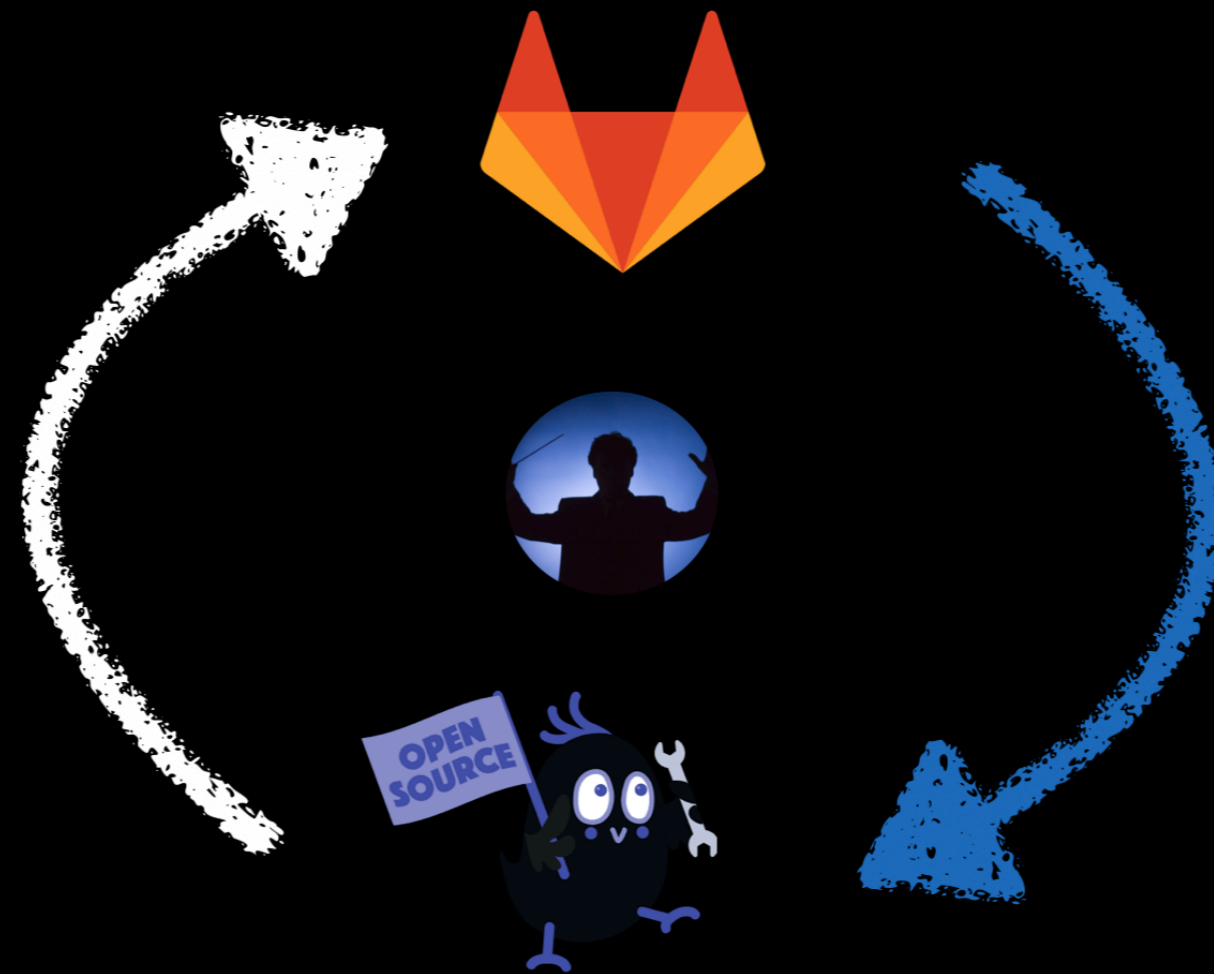
Enables **Iteration** to improve Chatbot **performance**.



Symphony: Components View







Continuous Integration/ Continuous Delivery

It will make your
life easier

*Conditions apply

3. **What?** Show me

Demo
time



PRESS START





**Increased communication & Collaboration between
teams**

2

CI/CD Reliability, reproducibility,
Auditability & Version Control

3



Manual
Development

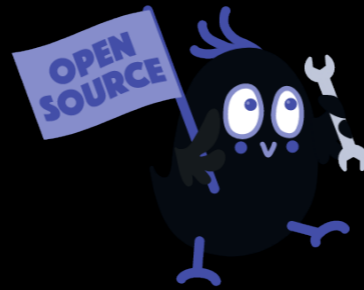
Pipelines

Processes: E2E Automation

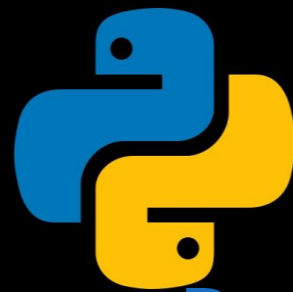
More



Gitlab DevOps Platform
Gitlab.com



Open Source Conversational AI
rasa.com



Starter Project

<https://gitlab.com/warias/pycon2020>